



4-H Connections

Van Buren County MSU Extension

Spring 2009

Dear 4-H Friends and Families,

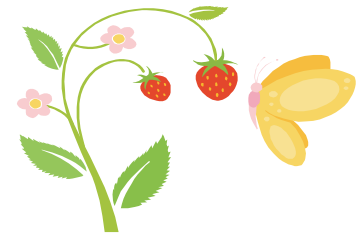
What a busy time of the year! School is coming to an end and all of the summer activities are just beginning. I hope this newsletter finds everyone working hard on completing all of your 4-H projects.

Please take a few moments to read the information contained in this newsletter. There are many important dates and programs highlighted.

I hope that everyone has a great summer. If you are traveling, I wish you safe travels.

Sincerely,
Janice Zerbe

Janice Zerbe
Extension Educator,
4-H Youth Development
rajzerj@msu.edu



Check It Out!

I have created a Van Buren County 4-H blog, this is a work in progress. This is something I am new at but my hope is to post information on upcoming events and events taking place within clubs. Be sure to check it out at: vanburen4-h.blogspot.com



Barn Setups for Van Buren Youth Fair

- Goats— Wednesday, July 15 at 10 a.m.
- Poultry— Wednesday, July 15 at 4 p.m.
- Horses— Wednesday, July 15 at 6:30 p.m.
- Livestock— Thursday, July 16 at 6 p.m.
- Cavies— Thursday, July 16 at 6:30 p.m.

Livestock Educational Workshop

This is your last chance to attend a livestock educational workshop to be eligible to show beef, sheep, swine and dairy at the 2009 Van Buren Youth Fair.

Fitting and Showing Clinic- June 27 at the Van Buren Youth Fairgrounds.

- 9:00 a.m. Swine
- 10:00 a.m. Sheep
- 11:00 a.m. Dairy
- 12:00 p.m. Beef



There will be a concession stand on the grounds. For more information contact Nancy Curtis (269) 657-2448 or Anne Webster (269)-207-7712.





Fair Pass Reminder

All youth exhibitor passes will be pre-sold. When a youth submits their June 15 Fair Pre-registration form they need to attach \$3 for their fair pass. Youth will then pick up their pass on Saturday or Sunday after they have entered their exhibit at the fair. Leaders and leader spouses will be able to purchase their passes on Saturday, July 18 or Sunday, July 19 for \$7 and \$10.

JLPA Fundraiser Volunteers

JLPA is once again planning their annual chicken dinner at the fair. This year not only will there be chicken dinners to purchase but you will also have the option of purchasing a pork chop dinner. This fundraiser can only be successful with the help of volunteers. Each club and open class is encouraged to recruit volunteers to serve the food, bus tables and act as runners. Typically these are two hour slots for volunteering, 10 a.m. – 12 p.m.; 12 p.m. – 2 p.m. and 2 p.m. – 4p.m. If you would like to sign up now for a specific time contact Anne Webster, 269-207-7712.

Livestock Interviews

Beef, Dairy, Sheep and Swine interviews will be held on Friday, July 24, beginning at 9:00 a.m. and end at 11:00 a.m.



Fair Theme
"Seasons of Michigan"

SMAC Record Books

All small market animal exhibitors are highly encouraged to complete a record for each species they exhibit. There are project record books for rabbits, poultry, cavies/lab animals and goats. There is a record book for the 6-8 year olds and 9-19 year olds in each species. Record books can be picked up from your project leader, key leader or at the Extension office. Record books will be turned into the species superintendent when your animals are checked in at the fair.

There is a cash prize for the top record book in each species by age division.



SMAC Barn Parents

Small animals are looking for adult volunteers to stay in the barns at night. It is highly encouraged that each 4-H club recruits 2 volunteers, this is the same for open class. Please contact the species superintendents to sign up by June 15. Barns are required to have adults in them at night per the fair board.



Jump Into Food & Fitness Camp

- Learn about healthy cooking, nutrition, and food safety through fun hands on learning experiences.
- Learn to incorporate physical activity into daily life.

WHEN: August 10 - 12, 2009
9:00 a.m. to 3:00 p.m. (3:30 p.m. on Wednesday)

WHO: Youth ages 8-12
Camp is limited to 30 youth and will be filled on a first come first serve basis.

COST: \$25 (scholarships available)

WHERE:
Human Service East Building
801 Hazen St.
Paw Paw MI 49079

For camp registration information contact
MSU Extension—
Van Buren County
219 Paw Paw St,
Suite 201
Paw Paw MI 49079
269-657-8213



Funded by Van Buren County
United Way Mini Grant



3 Days of Hands on FUN!





Important Dates

June

- 1- Fair Board 7 p.m. at the fairgrounds
- 3- Horse Council 7 p.m. at the fairgrounds
- 10- Exploration Day Orientation 6:30 p.m. at the Van Buren ISD Conference Center
- 11- SMAC 7 p.m. at the fairgrounds
- 15- ALL fair forms due
- 15- Leaders' Association 7 p.m. at the fairgrounds
- 22- JLPA 7 p.m. at the fairgrounds
- 24-26 Exploration Days- MSU
- 25- State Awards Celebration at MSU
- 27- SMAC Spring Show at the fairgrounds
- 27- JLPA Fitting & Showing Clinic at the fairgrounds
- 27- Show Clothes Swap at the fairgrounds

July

- 3- MSU Extension Office Closed
- 6- Fair Board 7 p.m. at the fairgrounds
- 8- Carcass Live Evaluation 6 p.m. at the fairgrounds
- 9- SMAC 7 p.m. at the fairgrounds
- 10- Carcass Judging at Pease's Packaging in Scotts 6 p.m.
- 11- Pullorum Typhoid testing for poultry 8 a.m. to 2 p.m. at the fairgrounds
- 18- Still exhibit judging at the fairgrounds 9 a.m. to 3 p.m.
- 20-25 Van Buren Youth Fair
- 27- JLPA 7 p.m. at the fairgrounds

August

- 3- Fair Board 7 p.m. at the fairgrounds
- 5- Horse Council 7 p.m. at the fairgrounds
- 10-12 MSU Extension Food & Fitness Camp
- 13- SMAC 7 p.m. at the fairgrounds
- 17- Leaders' Association 7 p.m. at the fairgrounds
- 24- JLPA 7 p.m. at the fairgrounds

Spring Small Animal Show

Van Buren County Small Market Animal Committee will be holding a Spring Show on June 27th at the Van Buren Fairgrounds. There will be lunch available on site.

Registration will begin at 7:00 a.m., there is a \$2 registration fee per class and there is a limit to **two (2) species**.

General Information

Dress Code

- *Long sleeved white shirt and white pants
- *Dark pants optional

Awards

- *Trophies awarded for showmanship classes
- *Best of show awarded for each species
- *1-3 place rosettes awarded for each showmanship class
- Grand and Reserved Rosettes awarded for each breed class

50/50 Raffle Drawing

1:00 pm **Rabbit**

Show begins at 8:00 am

For more information contact
Pam Berndt 269-637-3644



Attention Teens: Want some leadership experience?

Become a camp counselor for our new and exciting **Jump into Food and Fitness camp** on August 10-12. Camp counselors will be paired up and will be responsible for teaching and supervising camp participants. The camp is open to children ages 8-12. Counselors must be 14-19 years old. Please contact MSU Extension at 269-657-8213 for an application.

Applications are due on July 1st. Selection will be made the first week of July and a short interview will be scheduled on July 9th. Training and all supplies will be provided at an orientation that will take place on August 3rd from 9 am – 5 pm at the MSU Extension office in Paw Paw.

Fair Premiums

As some of you may have heard the Michigan Department of Agriculture has eliminated all fair premiums for the 2009 fair season. The Van Buren Youth Fair is still working on a plan to determine if they will pay the premiums in full or if they will be paid at a reduced rate. As soon as a decision is made, we will try our hardest to get this information out. Please check the Van Buren Youth Fair website at www.vanburenyouthfair.com for updated information.

Showmanship Classes

- 100 Pre-Pee wee under 6 yrs
- 101 Pee wee 6 to 8 yrs
- 102 Young 9 to 12 yrs
- 103 Junior 13 to 14 yrs
- 104 Senior 15 to 19 yrs

Breed Classes

- 105 Californian Senior
- 106 Californian Junior
- 107 Satins Senior
- 108 Satins Junior
- 109 Chinchilla Senior





Breed Classes cont.

- 110 Chinchilla Senior
- 111 French Lop Senior
- 112 French Lop Junior
- 113 All Other Commercial Senior
- 114 All Other Commercial Junior
- 115 Dutch Senior
- 116 Dutch Junior
- 117 Netherland Dwarf Senior
- 118 Netherland Dwarf Junior
- 119 Silver Martin Senior
- 120 Silver Martin Junior
- 121 Angora Senior
- 122 Angora Junior
- 123 Mini Lop Senior
- 124 Mini Lop Junior
- 125 Mini-Rex Senior
- 126 Mini-Rex Junior
- 127 Other Pure Bred Fancy Senior
- 128 Other Pure Bred Fancy Junior

Cavies & Lab Animals

Show begins at 9:00 am
 For more information contact
 Mary Darling 269-624-6944
 Mixed Breed Cavies May be Shown

Showmanship Classes

- 100 Pee-peewee Cavy under 6 yrs
- 101 Peewee Cavy 6 to 8 yrs
- 102 Young Cavy 9 to 12 yrs
- 103 Junior Cavy 13 to 14 yrs
- 104 Senior Cavy 15 to 19 yrs
- 200 Pre-peewee Lab Animal under 6 yrs
- 201 Peewee Lab Animal 6 to 8 yrs
- 202 Young Lab Animal 9 to 12 yrs
- 203 Junior Lab Animal 13 to 14 yrs
- 204 Senior Lab Animal 15 to 19 yrs

Cavies & Lab Animal Breed Classes

- 105 American Cavy
- 106 Peruvian Cavy
- 107 Silky Cavy
- 108 Teddy Cavy
- 109 Crested Cavy
- 110 Rare Breed Cavy
- 205 Single Rat
- 206 Single Hamster
- 207 Single Gerbil
- 208 Single Other

Goats

Show begins at 10:00 am
 For more information contact
 Denise Hettig 269-468-5037
 No horns allowed. All goats must be tagged.
 Market Wethers must be born after January 1, 2009.

Showmanship Classes

- 100 Pre-Peewee under 6 yrs
- 101 Peewee 6 to 8 yrs
- 102 Young 9 to 12 yrs
- 103 Junior 13 to 14 yrs
- 104 Senior 15 to 19 yrs
- 105 Adult 19 yrs and over

Dairy Classes

- 106 Doe Kid I up to 6 mos
- 107 Doe Kid II 7 to 15 mos
- 108 Doeling 15 mos to 2 years

Non-Dairy Classes

- 109 Doe Kid I up to 6 mos
- 110 Doe Kid II 7 to 15 mos
- 111 Doeling 15 mos to 2 yrs

Misc. Classes

- 112 Market Wethers
 - 113 Milkers yearlings and over
- * No awards for class 105

Poultry

Show begins at 11:00 am
 For more information contact
 Curt Cowell 269-253-4517
 Pollorum Typhoid free certification is required for each entry. Testing is available on site from 7:00 am to 10:00 am for 25 cents per bird.
 Classes 105, 106 and 107 are open to breeding pairs only.

Showmanship Classes

- Class 100 Pre-peewee under 6 yrs
- Class 101 Peewee 6 to 8 yrs
- Class 102 Young 9 to 12 yrs
- Class 103 Junior 13 to 14 yrs
- Class 104 Senior 15 to 19 yrs

Breed Classes

- Class 105 Fancy Breeding Pair
- Class 106 Bantam Breeding Pair
- Class 107 Standard Breeding Pair



Fair Fees

If you are involved with small animals and have to pay \$10 per family do not combine this with the fair exhibitor pass fee.
 Please write two separate checks; \$10 to SMAC and the pass check made out to Van Buren Youth Fair.



Mackinaw Trip

Interested in traveling north with a group of other Van Buren County 4-H teens, here is your chance. Contact Janet Tripp to get more information on a 3 day to Mackinaw Island. The tentative plan is to board the boat to the island and spend time there, see a laser light show and meet with other 4-Hers from the area to complete a craft or a service project. The trip is scheduled for August 1-3 and the approximate cost is \$235.00. There have been some fundraisers planned to help raise money to attend. It's not too late to sign up, contact Janet today at 637-2639.

MSUE to offer Home Canning Seminars

The Michigan State University Extension Office in Paw Paw is offering four home canning and freezing seminars this summer starting in July. The sessions will feature education on the recommended procedures for preserving food and step by step demonstrations featuring the fruits or vegetables that are available in each month. Participants will learn about necessary equipment, safe handling of food, tried and true procedures, safety issues and practical tips and techniques. Following are the session dates and planned topics: July 15, 9am-12pm, "Fun Food-Jams, Jellies, and Pickles"; August 21, 2pm-5pm, "Canning fruits-peaches and others"; September 23, 9am-12pm, "Everything About Tomatoes!"; and October 7th, 2pm-5pm, "Apple Products and Fall Vegetables". All sessions will take place at the Human Services Building Kitchen, 801 Hazen Street, Paw Paw. Seating is limited so pre-registration is required. Each participant will receive recipes and "starter kits" as supplies are available. To register, please call Diana, Extension Educator, at MSUE at 269- 657-8213. Along with the seminars, MSUE is conducting a canning jar drive. Donors may bring their tax deductible donations of jars and other canning implements to the MSUE office at 219 E. Paw Paw Street, Suite 201, Paw Paw. Pick-up service is available. These items will be distributed to the seminar participants so they can take home a little of everything they may need to get started in home canning.



And the County Medal Goes To...

It is time to start thinking about completing your County Medal applications.



Who is Eligible: Members must be actively enrolled in a 4-H club that is in good standing. This includes club's enrollment records, financial statements, participation in the Leader's Association fundraiser, etc. Some awards only require a nomination from a member's club coordinator, others require recommendations and an award application. Leaders and parents are encouraged to assume an active supporting role in helping the 4-H member complete their applications but the work and applications are to be completed by the member. There may be specifics for each award.

4-H members may be nominated for a County Medal by their project leader, key leader or may nominate themselves. All nominations must be sent to the key leader to review and approve.

Requirements for County Medal Awards:

- Must be at least 12 years old by January 1 of current year
- Must have completed two years in the project
- Must not have previously received a County Medal in that project area
- Application form must be completely filled out and signed by both the project leader and the key leader

County Medals are not necessarily awarded to a member who received a trophy or best of show ribbon at the fair. A 4-H member does not need to exhibit at the fair to be considered for a County Medal. Instead, this award is intended to honor the 4-H member who has actively participated in the project and was willing to assist others when help was needed.

To be considered for a County Medal, the award nominee's score must be at 70% or above of the total points available.

Deadline: September 1, to Key Leader

Please refer to the Van Buren County Awards handbook for more information. Applications may be acquired from Key Leaders, Project Leaders or from Michigan State University Extension.

National 4-H Congress

Accept the Challenge, and be the best person that you can be! The National 4-H Congress experience provides a great

opportunity for 4-H members from across the country to come together and learn about community involvement, culture diversity, and service to others while meeting new friends and experiencing Atlanta, Georgia.

The history of the National 4-H Congress goes back more than eighty years. An educational tour to Chicago was the forerunner to what would eventually become known as National 4-H Congress. This annual tour was held in the Union Stock Yards during the International Livestock Exposition. There, over 100 young men and women met to exchange ideas and receive recognition for individual accomplishments and community service.

The number of participants steadily grew, and by 1922 this annual event was designated the National Boys and Girls Club Exposition. This meeting is officially considered the first National 4-H Youth Congress.

Exhibits, demonstrations and a popular parade became the annual program for 4-H during the International Livestock Exposition. For 73 years, National 4-H Congress gave over 100,000 delegates, Extension staff, volunteers, partner representatives, exhibitors and other friends of 4-H the opportunity to participate in a special event. There was no National 4-H Congress in 1995, but two invitational events were hosted by the Southern Region and Western Region states. 1996 saw the rebirth of National 4-H Congress in Memphis under the leadership of the Extension Service - USDA. Memphis was the home of National 4-H Congress until the event moved to Atlanta in 1998.

National 4-H Congress for 2009 is scheduled for November 27 to December 1 in Atlanta Georgia. Congress is designed for youth aged 15-19. There is no limit for Michigan participants and there is no state or regional selection. The total cost is \$885 per delegate, which includes— airfare to Atlanta, registration fees, lodging, meals, a shirt, a group photo and Monday's lunch. There is a \$100 deposit per delegate due June 20th.



If you would like more information please contact the Van Buren County MSU Extension office.

MSU is an affirmative-action, equal-opportunity employer. Michigan State University Extension programs and materials are open to all without regard to race, color, national origin, gender, gender identity, religion, age, height, weight, disability, political beliefs, sexual orientation, marital status, family status, or veteran status.