

The Grapevine

Bulletin of the Saginaw Valley Master Gardener Association

July 2006 Volume 10, Issue 7

Retiree relishes her time spent gardening

Deb Keller may have originally bought her Thomas Township home 30 years ago because the high ceilings were perfect for her large pieces of furniture.

But today, it's the one acre of land the house sits on that captures her imagination and keeps her active.

Members of the Saginaw Valley Master Gardener Association can see how she's

transformed the garden at the 100-year-old farmhouse at the July meeting.

"My husband and I were working and had two little girls when we moved in," says Keller, who was born in Germany.

"I took the one and only spirea out the first or second year we were here, but I left the peonies. I never made a plan, I just filled in as I could afford it."

That meant junipers around the foundation and adding some annuals around the peonies planted in the grass.

Although there was a large vegetable

garden, it was too much to care for while working and trying to run a household.

However, after her children were grown and the prospect of retiring as a paralegal for the U.S. Attorney's office in Bay City neared, Keller enrolled in the Master Gardener class.

"I had already been inspired, before it was just a matter of time and money,"

explains the former SVMGA treasurer.

"Now I can do as I please — and I haven't bought clothes in four years. Instead it goes toward upkeep of the house and plants."

As the nine silver maples she inherited in the yard began to die, new flowerbeds were born.

"That's why so many of my beds are raised. I had the stumps dug out, but there were still the roots to contend with," Keller says.

Her first project was getting rid of those junipers she planted years ago.



Deb Keller, Advanced Master Gardener, takes a break from cleaning up her flowerbeds.

Next meeting

- 7 p.m. to 9 p.m. Wednesday, July 26, at the home of Deb Keller, 1604 N. Thomas Road.
- 7 p.m. — 7:30 p.m. business meeting
- 7:30 p.m. — 8 p.m. refreshments
- 8 p.m. — 9 p.m. Tour garden
- **NO GUESTS!!!**
- **Please wear your badge and bring a chair.**
- Directions: Take Gratiot (M-46) to North Thomas Road, take right at Geddes, go across bridge, following curve to first house north of Geddes. Or take State to Miller, left one-half mile to Geddes, turn right, 1.7 miles to Thomas. Take driveway in, past garage where 30 to 40 cars can park between garage and neighbor's barn.

That was followed by creating a flowerbed around those peonies and annuals in the grass.

"I would like to plant more trees and I've asked my neighbor to sell me a little

(Continues on Page 6)

Inside this issue:

Midland garden walk July 19	2
President's letter	3
Meet the Gardener	3
Odds and ends	4
Volunteer opportunities	5
Minutes of the May meeting	6
Register now for fall conference	7

Extension names new MG coordinator

Nancy Burd claims she's only "sort of a gardener" and begs "please don't check my yard."

But the new Saginaw County Master Gardener Coordinator has plenty of experience with Michigan State University Extension.

The Midland resident served as administrative assistant for the East Central Regional Extension office, which coordinates the local Extension branches.

She worked on personnel and salary budgets.



Nancy Burd is the new Master Gardener Coordinator.

When that office closed and combined with the Southeast Regional office last July, Burd transferred to the

Saginaw County Extension office where she does "a little bit of everything. I'm like a refugee," she jokes.

Her first three months here were spent finishing up business for the now defunct regional office.

"I also was the portal trainer when the MSU Extension web site was implemented," explains Burd, who attended Central Michigan University.

These days she's putting together

(Continues on Page 2)

Lush landscapes part of Midland garden walk July 19

MIDLAND — The annual Reece Endeavor Garden Walk is from 2 p.m. to 7 p.m. Wednesday, July 19.

The third annual event for the Reece Community Living Endeavor helps fund housing for adults with developmental disabilities and mental illness.

Funds will go toward constructing a wheelchair-accessible home.

The home will be built by local high school vocational education students on a lot donated by a Midland church, says Elaine Popovich, deputy director of the Endeavor program.

“This year we’ve got five family gardens plus Dow Gardens and I have to say, the gardens are just lush and fabulous.

“The gardens are picked because they are spectacular and then it seems like after the gardens are picked, the families triple their gardening efforts.”

She says all of the gardens have some type of water feature.

“We didn’t plan that — it just hap-

pened,” says Popovich.

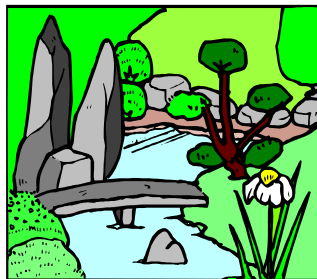
“The Clark family garden on Main Street is one of Midland’s historical homes with the classical columns in the front.

“The garden in the front has been updated, but when you walk into the back, there’s a pool and it’s like a sanctuary.

“It backs up to the Rail Trail, although I walk that, and I had never seen the garden before because it’s so secluded.”

The Julie Ann street garden, near the Midland Mall, has a brook in the front yard, statuary, hostas and flowers.

“And you have to understand although this house is located in an area of really nice homes, you just can’t imagine how nice the rolling back yard is,” Popovich says.



The Mohlmann garden has a pond and many varieties of flowers.

“The owner is a freelance editor for Better Homes and Garden magazine,” Popovich explains.

“The back yard is so lush — it’s a real surprise, how it opens up, just a real step beyond.”

Tickets are \$10 in advance and \$15 the day of the walk.

For tickets, call Popovich at (989) 835-9700. Or visit Dow Gardens, Smith’s Flowers, Coffee Chaos, Quick Reliable Printing, Personal Expressions or the Reece Community Living Endeavor office in Midland for tickets.

Last year, some 700 people toured the garden walk, raising \$10,000 for the project.

Master Gardeners will staff the gardens to answer visitor questions.

Learning duties a challenge, says Burd...

Continues from Page 1

quarterly reports and helping with computer work, in addition to the eight hours a week she spends supervising the Master Gardener volunteer program.

“I would like to see the office get cleaned up, but right now it’s a challenge learning all about it,” says the mother of two and grandmother of one.

“I’m following Karen’s notes and depending on Grey (Gitzen) for background.”

Although she was born in Ohio, she’s lived in Midland three different times, returning the last time in 1982.

It’s also where she met her husband, Dick.

“Yes, I have flowers and we have a big yard where we’ve ripped out the old landscaping and are putting in new,” Burd explains.

“We have a lot of trees and I’ve had some wonderful tomato years — but this

is not going to be one of them.”

The renovation came after the Burds put on an addition. Two truckloads of topsoil later, they’re still working on the yard.

“My parents grew up on farms, so gardening was part of growing up for me,” Burd says.

In her free time, she’s a singer.

“I sang with the Midland Music Society Chorale for 15 years and was part of the original group of the Camerata singers for six years.”

These days she limits her singing to her church choir, although she is considering auditioning for the Saginaw Choral Society.

“My son and his family are moving to Midland and I’m really looking forward to having them back again,” she says.

Those who need to reach Burd may e-mail her at burd@msu.edu or call 758-2504.

Officers for 2005-06	
<i>President</i>	
Grey Gitzen	792-0615
<i>Vice President</i>	
Nancy Hales	799-2118
<i>Secretary</i>	
Anne Birkam	754-7090
<i>Treasurer</i>	
Jan O’Dell	793-4357
<i>Program Director</i>	
Amy Fitkin	781-1670
<i>Newsletter Editor</i>	
Darlene Damp	746-9113
MSU Extension	
One Tuscola Street	
Saginaw, MI 48607-1287	
<i>Master Gardener Coordinator</i>	
Nancy L. Burd,	758-2504
e-mail, burd@msu.edu	
<small>Michigan State University Extension programs and materials are open to all without regard to race, color, national origin, gender, disability, age, religion, political beliefs, sexual orientation, marital status or family status.</small>	
<small>Michigan State University, U.S. Dept. of Agriculture and counties cooperating. MSU is an affirmative-action, equal opportunity institution.</small>	

Saginaw Valley Master Gardener Association mission statement

“Joining together as Master Gardeners, our mission is to promote our enthusiasm and knowledge of gardening by a wide variety of educational and volunteer activities in a spirit of fun and friendship.”

Letter from the President

I don't know if its just my imagination, but are the weeds bigger and more aggressive this season?

I've been gardening for quite some time and I can't remember when the thistles have been so lush.

We also have encountered a couple of thugs that have been trying to take over beds in our garden: a Lamiun called Archangel that grows faster then we can pull it, and Houttuynia Chamelion that is trying to establish ownership of one of our backyard beds.

I understand that these species are both established perennials, but in our garden they definitely are weeds.

For those of you who missed our last membership meeting, you missed a really fine garden.

Thanks Melva for allowing the Master Gardener Association to visit your garden, as well as your neighbors. It's nice to

visit a neighborhood with no fences.

Elsewhere in The Grapevine you will see a list of Master Gardener volunteers who have utilized the computer system, entered their volunteer and education hours and are already certified for 2006 (Page 4).

If you have access to a computer you do not have to wait until December to enter your volunteer and education commitments. You can enter them as you complete them.

The summer Master Gardener Conference is over for another year. There were 20 of us from Saginaw County who attended.

The food was good (as usual). Most of the presenters were well informed and gave us useful information we can use as we garden in the Valley.



Attendance was down, and I suspect the state office is rethinking the format for future conferences. As soon as information is available it will be in The Grapevine.

Have you ever considered being an officer for the Saginaw Valley Master Gardener Association?

We elect new officers every two years and it is that time again.

I've appointed a nominating committee whose assignment is to find a slate of officers to represent the association for the next two years.

Committee members will be introduced at the next meeting, so if you have an interest in serving please let them know.

Our next meeting is in Deb Keller's garden July 26.

Grey

Meet the gardener — Donna Kieselbach of Montrose

This Master Gardener became involved in a major renovation of the courtyard at her church because tree roots were growing into the foundation and mowing the grass was very tough.

They actually had to carry the lawn mower through the church kitchen! Trees were removed and memorial bricks were sold to pay for a pathway and new garden. A water fountain feature is in the future for Trinity United Methodist of Chesaning.

Donna Kieselbach thinks of herself as a naturalist because of her roots. She says she was born in a "little hospital" in Alma and lived on a farm in Breckenridge where her parents raised cattle, rabbits and vegetables.

She was a member of 4-H and learned sewing (her mom was the sewing teacher) and gardening; mostly vegetables. She also sold "cash crops" at their vegetable stand.

After graduation from St. Louis High School, Donna received a bachelor's degree in math and physical science and a master's in math. She taught at high school for four years (that was enough!) and then found her niche with Ma Bell as an analyst

in programming.

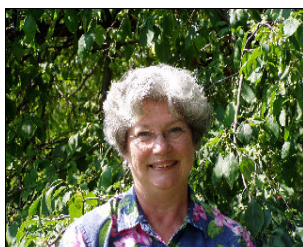
For 20 years she managed the computer room and technical personnel. In 1996 IBM picked her up to work at

Ameritech; same desk, same people, four more years.

Donna finally retired in 2000 and says she is busier than ever. She loves golf and is in her 10th year and is in a league at Crooked Creek. She also tries to stay in shape at Curves. She traveled to Paris on

a business trip in 1996 -- the guys worked while the gals played. She has been twice to Hawaii -- the second trip was for son Kile's graduation in 2005. Being involved with her son started when he was much younger, but continues yet as she travels to Ohio for annual Christian Rock concerts by "ALIVE."

The excitement in her voice raises when she reveals the tale of her trip to Israel for 10 days last January. Most "awesome" were the historical digs.



Donna Kieselbach is an Advanced Master Gardener.

She saw a couple of pools from Christ's time and the cave where the Dead Sea scrolls were found.

She traveled on the old road to Jericho (Good Samaritan) and walked on the excavated stairs Jesus used at Mount Zion. At the Mount of Olives, (she really liked that!) in the Garden of Gethsemane, there were olive trees and an olive press 2,000 to- 3,000 years old!

Donna is an advanced Master Gardener who has worked at the CAER Center, planting and tending gardens there for two years. She also has played hostess at the Butterfly House at the Saginaw Children's Zoo.

Through her church, Donna is involved in Chesaning's Showboat festivities, serving up roast beef dinners.

When she is done, Donna returns to her natural environment "in the country" on 75 acres, with woods and a pasture in Montrose.

There she says she has a constant "work in progress," more flowers now than vegetables. Donna started a "blue garden," to which she recently added some yellow flowers for "punch."

Story by Joan Martin

Odds and ends

Pot up your extra plants!!

Saginaw Valley Master Gardener Association needs to replenish its coffers so it's planning a plant sale for September.

Details are still in the works, but the plant sale is tentatively set for early September at the Saginaw Farmer's Market.

Ruth Sny and Nancy Hales are coordinating potential fund-raisers to add to the general fund.

Anyone who is interested in volunteering should contact Sny at 792-5688 or 928-7315.

Volunteers will be needed to help sell plants and get plants to the sale site.

Looking for new officers for 2007 — 2008

It's nearly time to nominate new officers for the next two-year term.

President Grey Gitzen will appoint a nominating committee within the next month.

Their job is to seek out members willing to serve as president, vice president, secretary, treasurer and program director for the next two years.

Don't worry if you don't have a lot of experience. The former president serves in an ex-officio capacity advising new board members on past policies and procedures.

Current terms expire in December.

If you are interested in serving on the nominating committee — or better yet, as an officer, please contact Gitzen at 792-0615 or jgreygzn@aol.com.

HealthSource says thanks

Thank you for the donation of money to purchase flowers and pavers for the residents' garden area.

Thanks to Jane, Dave and Sheila for their time spent!

Teresa Emerson
HealthSource Saginaw activity director

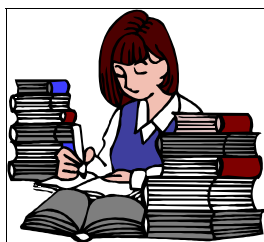
Saginaw County Promise offers thanks to MGs

Members of Saginaw County's Promise Giving Back Team want to thank you for your willingness to support our recent Students Spring into Service efforts May 13 and 18.

Between the two days we had nearly 200 students from 14 schools and clubs. This service day found us at five different senior centers where our volunteers painted, planted, spread mulch and topsoil, cleaned up and spent some time visiting with seniors.

Thank you for your contribution of a \$200 donation for flowers and plants. Without the generous support of community members such as you, this day would not be possible.

The generosity of our sponsors, donors, volunteers and everyone involved is incredible. And because of such support we are able to provide a spring and a fall day for our youth to volunteer and help those less fortunate.



These service days are a collaborative effort between the Saginaw Community Foundation's FORCE, United Way of Saginaw County, Communities in Schools — The Answer to Saginaw County's Promise, Michigan State University Extension 4-H and the Master Gardeners.

These youth service days are well-received by everyone involved. The recipients are so grateful they are usually moved to tears. The students feel so rewarded to see how much their help means to those in need and everyone involved comes away with a great feeling of satisfaction.

Thank you again for supporting opportunities for our youth to give back to their community and its members.

Marsha Cooley, volunteer services coordinator, United Way of Saginaw County
Kristin Reis, finance and program assistant, FORCE coordinator
Stephanie Wirtz, Saginaw County Promise Coordinator

Five more earn certification

Five more Saginaw Valley residents have earned their 2006 certification or recertification as Master Gardeners.

They include: N. Phyllis Shlien and Susan E. Vollbrecht as basic Master Gardeners.

Newly recertified members are: Sherry L. Burkhart, Joe Leach and Sally Shepardson.

They have entered their education and volunteer hours on-line, meeting the basic minimum requirements.

Ogemaw County sponsors Garden walk July 15

WEST BRANCH — The second annual Garden Walk, featuring eight gardens in Ogemaw County, is from 10 a.m. to 5 p.m. Saturday, July 15.

It is sponsored by the Ogemaw County Master Gardeners and MSU Extension-Ogemaw County.

One of the gardens featured is the Riverwalk Children's Garden at the Episcopal Church Convocation of Northern Michigan, 100 E. Houghton Ave. (M-55), West Branch.

Tickets are \$8 per person prior to the event or \$10 the day of the walk.

Tickets are available at: West Branch Greenhouse, Ogemaw County Extension Office and Rose City Greenhouse, or at any of the gardens the day of the walk.

For information, call Ogemaw County Extension at (989)345-0692, or Colleen, event chairman, at (989)345-8056.

No newsletter? Try this...

Members who don't receive a newsletter in the mail may go to the Web site to download a copy, prior to the meeting.

Extra copies also are available at the MSU Extension office downtown, or at the regular meetings. Please notify Nancy Hales if you are not receiving a copy.

Playscapes earn MSUE hours

Both the Saginaw Township Playscape and Rainbow's End, the playscape for disabled children at Walmart, are expected to become MSUE-directed projects.

The designations allow Master Gardener trainees to complete part of their 40-hour volunteer requirement by working at the projects.

For the Saginaw Township Playscape, please contact Deb Keller, 781-1228 or Amy Fitkin, 781-1670.

For Rainbow's End, please contact Crystal Kauer at 792-6874.

Volunteer opportunities!!!

Saginaw Township Playscape

Co-chairman Deb Keller is looking for help to weed and water the gardens for the remainder of the season.

The project is expected to be approved shortly for MSUE-directed hours for Master Gardener trainees.

"It's a big job keeping up with the gardens there," says Keller, "but we get so many positive comments from the moms — and even the dads.

Call Keller at 781-1228 or e-mail HelliKeller@aol.com.

Survey time at Farmer's Market

Aileen Cowan is looking for volunteers to do survey and count market-goers in August and September at the Saginaw Farmer's Market.

Master Gardener Trainees earn MSUE-directed hours when they volunteer at the Saginaw Farmer's Market.

Contact Cowan for dates and times at (989) 865-8784 and leave a message, or email scratchcreations@att.net.

Saginaw Children's Zoo...

Please weed to your hearts content (an

hour or two would be great) anytime between 8 a.m. and 5 p.m. Attack any garden area with large weeds — and if you can't find an area to attack, ask for Darrell or Mike, who will point you to an area.

Weeds and debris need to be put in a wheelbarrow and taken to the dumpster behind the carousel. All help is greatly appreciated!

Contact Patti Decker, zoo horticulture chairperson, at 792-6633, home; 797-3478, work; or 860-0933, cell.



MSUE display garden...

Volunteers are needed for the MSUE Display Garden, adjacent to the Extension office at 1 Tuscola.

Volunteers work about two hours per week to deadhead, weed and water as needed.

Work at your convenience and earn MSU-required volunteer hours.

Contact Peggy Shaver at peggysgar-

den@sbcglobal.net or 695-5489.

Saginaw Art Museum...

Volunteers will meet from 9 a.m. to noon Saturday, Aug. 5, for weeding and deadheading and Saturday, Oct. 14, for end of the season clean-up at the Saginaw Art Museum, 1226 N. Michigan.

Please contact Shelley Whitehead at 892-0719.

Saginaw County Rail Trail...

Aileen Cowan is seeking help for weed patrol for the season.

Contact her at 865-8784 or scratchcreations@worldnet.att.net. The Rail Trail earns MG Trainees MSUE-directed hours.

Food Security through Family Garden, Nutrition, Education Project...

Director Vickie Flynn needs volunteers to mentor, rototill and build raised planter boxes for participants of this MSUE-approved program.

Mentors answer questions and possibly visit the garden site.

Call Flynn at 758-2500 to volunteer.

New books detail care of dogwoods, garden plans

Jed Fulkerson, SVMGA member and an Advanced Master Gardener, shares his thoughts on two gardening books he's recently read.

"**Dogwoods,**" by Paul Cappiello & Don Shadow, Timber Press, 2005, 224 pages.

How can you tell a Dogwood? By its bark !!!

This is the only book to date devoted to the gardening of the genus, Cornus.

Dogwood is a full season plant. Spring flowers, summer fruit and foliage, autumn fruit leaf colors and winter bark and form.

They range from mid-sized trees to mat-forming plants.

They are reasonably tolerant, generally require slightly acidic soil and some moisture, well drained.

From Kinnickinick to Red Oasier, this species is very cold hardy.

It's found along streams and old fields.

Varieties are often easily spotted while driving 70 mph along the highway.

Dogwoods are likely to be around long after we are all mulch.

If you're into Dogwoods, or would like to be, this book is for you.

"**The Welcoming Garden,**" by Gordon Hayward, 2006, Gibbs Smith Publisher, 143 pages, color photos.

Do you have some evergreen plantings along the front of your home and the lawn runs from it down to the street?

Say no.

Do you want your entry garden to invite, enrich and enliven those who approach your house? Say yes.

The new Saginaw Valley entry garden means a refreshing, pleasant walk from car to front door, among plants, grasses, herbs, and/or fruit trees.

The entrance to the home always pro-

vides a statement about who's inside the house and that the visitor is welcome.

Let's talk.

The focus of this book is about designing your own front garden.

The author uses a step-by-step process to help you create your own entry garden.

About 75 photographs and print drawings help the reader visualize the fundamental design principles.

The author explains in detail, how to interpret the photos.

You can take these principles, apply your budget, expertise and time to come up with a satisfying project. It's about space and how to handle it.

The author helps you come up with the "Big Idea," which then makes the smaller decisions much easier.

Big, small, lawn, no lawn, one- and two-story houses. It's all here.

Minutes of the June 28, 2006 meeting

Grey Gitzen welcomed 48 members to Melva Bond's home.

He thanked Melva, her husband, Clifford, and neighbor Freddie Goodson for their hospitality.

David Quinnan moved that the minutes of the May 2006 meeting be approved as published; Patti Decker seconded the motion.

Jan O'Dell read the following treasurer's report:

Balance of last report	\$6,308.41
Deposits 5/24/06 to 6/27/06	\$495.00
Expenses 5/24/06 to 6/27/06	\$697.94
Balance as of 6/27/06	\$6,105.47
Funds for the fall seminar	\$2,950.72

As of 6/27/06 we have 166 paid members.

Raeann Krauss moved that the treasurer's report be accepted; Shirley McNier seconded the motion.

A sign-up sheet was available for those members interested in going on the Beal Gardens tour.

Gaye Sass is coordinating the Sutton's Bay tour. It will be a one-day tour on Saturday, July 29.

Those people interested in staying overnight should make arrangements for accommodations themselves. Anyone interested in going should sign up with their e-mail address.

Members can still sign up at the next meeting.

A sign-up sheet was available for refreshments for the rest of the year.

Some 20 members from Saginaw

County attended the annual Master Gardener Volunteer Summer Conference in East Lansing.

Next year's conference is not definite.

The conference was going to be moved to April, however, the date conflicted with Isabella County's conference.

There have been a lot of responses to the survey sent out.

Some 351 people attended the conference, which is down from last year.

Gus Schulwitz won the drawing to have his conference fee paid.

Shirley McNier had logo wear for those members who ordered it.

She will be leaving it at the office after this meeting.

The lanyards are for sale now and will be for sale at the seminar in October.

Anyone who bought a misspelled lanyard should return it for a correctly spelled one.

The new master gardener coordinator is Nancy Burd.

Gloria Schuler mentioned that the I-75 rest stop was featured on the front page of the Saginaw News June 3.

After the meeting was adjourned members enjoyed refreshments and tours of the gardens.

Submitted by Anne Birkam, secretary

"Drive-by" garden entertains walkers, bikers...

Continues from Page 1

bit of her property, but so far no success."

She describes her garden as the "35mph view."

"I like color and the way the garden looks from a distance, what drivers and walkers see going by," Keller says.

"That's why I don't have roses, you have to look at them up close. I like more the impression you get driving by of having a colorful yard with different shapes."

Plants that find a home in her garden must be well-behaved and easy to transplant.

"I also like plants with a long season, like sedum — it looks good from the time it comes up until about February. It's not spectacular, but it's easy to care for."

Of course, Keller does have a soft spot for baby's breath, which is not so well behaved, and for monarda because the bees love it and it has a good smell.

"I love that big white cloud baby's breath makes so I have some in most of my beds. I guess I'm not a purist, I'll try anything once."

Keller has worked hard to rid her yard of Michigan bamboo and lily of the valley.

"I can't believe people buy lily of the valley," she exclaims.

It's nothing for the mother of two and grandmother of twin grandsons to spend several hours a day in her yard.

"I keep finding areas that need to be redone," Keller says.

"I've always had the gardening bug. I remember for my 10th birthday getting some money and instead of buying candy, I bought zinnia seeds.

"Back then, after the war, my parents were renting an old farmhouse. We had the use of a little land to raise food — you weren't supposed to mess with flowers. But my dad gave me space and I can remember how thrilled I was when they sprouted.

"I've always had zinnias. When I came to this country in 1964, my husband was in Vietnam and I was living in Oklahoma. There was water rationing, but I planted a little patch of zinnias so he would see flowers when he came home."

Keller continues to raise many of her plants from seed, allowing her to try new varieties, including several interesting annual vines this year.

And having been through WWII, this frugal gardener still plants fruits and vegetables, just in case.

The Advanced Master Gardener volunteers at the Saginaw Township Playscape, the Children's Zoo, Make a Difference Day and Students Spring into Service.

Story by Darlene B. Damp, editor

**Next board meeting:
5:30 p.m. Wednesday,
Aug. 2, at MSU Extension,
1 Tuscola**

**Newsletter deadline:
Monday, Aug. 7**

**Send submissions to
Darlene Damp, editor,
shrew@att.net**

**View the newsletter at:
Web1.msue.msu.edu/
mastergardener/saginaw/**

AN AUTUMN AFFAIR FOR GARDENERS

8:15 a.m. – 4 p.m. Saturday, October 7, 2006

Saginaw Valley State University, Curtiss Hall, University Center, MI

The Saginaw Valley Master Gardener Association says don't give up on gardening just because the leaves turn color! Instead, please attend our third annual fall seminar. Here's what the day includes:

- **Keynote speaker Bill Cullina**, author and nursery manager of the New England Wildflower Society's Garden in the Woods in Massachusetts, opens the session with **"What the Heck's Gonna Grow There!!! Native Trees, Shrubs and Vines for Challenging Situations,"** looking at their aesthetic allure and ecological appropriateness. Cullina closes the seminar with **"Beyond Black-Eyed Susans and Border Phlox: Exceptional Native Perennials for Creative Gardening,"** by profiling outstanding native perennials yet to be discovered by the gardening public.
- **Sally Shepardson**, Advanced Master Gardener, offers **"Environmentally Sound Gardening and Integrated Pest Management."** Learn how common cultivation techniques and fertilizer/pesticide use impacts the environment along with practical solutions for treating problems in your own yard.
- **Charles Martin**, Dow Gardens horticulturist, discusses **"Green Pollution: Invasive Plants in Michigan,"** including problem plants for native landscapes, that create more maintenance for busy gardeners.
- Early registration \$50, including box lunch/snacks, by **Friday, Sept. 15; \$55 after.** Vendors, checks/cash. Master Gardeners earn 4 education hours. Call Judy Henning, (989) 799-4136 or Aileen Cowan, (989) 865-8784 or e-mail judrich@sbcglobal.net or scratchcreations@worldnet.att.net. Conference brochures: <http://web1.msue.msu.edu/mastergardener/saginaw/>

REGISTRATION FORM

Name _____

Address _____

Phone _____ E-mail (conference purposes only) _____

Please check if you are a Master Gardener. Please choose a lunch entrée (chips, fruit cup, cookie, drink included):

Turkey and roast beef on croissant, or Vegetable pita

Mail check (\$50 for each person attending, payable to **SVMGA**) to SVMGA Treasurer Jan O'Dell, 5122 Hickory Court, Saginaw, MI 48603. **No refunds; substitutes accepted.** SVSU is located between Saginaw & Bay City on M-84, near I-75.

Upcoming 2006 programs

- 7/26 — Tour of Deborah Keller's Thomas Township garden
- 7/29 — Tour Bellwether Gardens, Suttons Bay; Dr. Joe Blair's garden, Children's Gardens, Farmers Market wineries in Traverse City (possible overnight trip)
- 8/23 — Tour of Mark Torregrossa's Weather Garden
- Mid-September — plant sale to raise funds for SVMGA
- 9/20 — Fall plant exchange at Ruth Sny's Saginaw Township garden
- 9/27 — George Papadellis of Telly's Greenhouse, Troy, "Ground Covers"
- 10/7 — "An Autumn Affair for Gardeners," annual seminar with Bill Cullina, author and plant propagator; Chuck Martin, Dow Gardens horticulturist; and Sally Shepardson, Advanced Master Gardener, Saginaw Valley State University, Curtiss Hall.
- 10/25 — Bob Kuszmaul, "Propagation of Shrubs"
- 11/15 — Nancy Lindley of Great Lakes Roses, "Winter Hardy Roses"
- 12/6 — Annual Christmas potluck

Meetings from January to April and September to December are at the Andersen Enrichment Center. Meetings in May through August are at members' homes or other garden sites. For field trips, call Amy Fitkin, 781-1670.