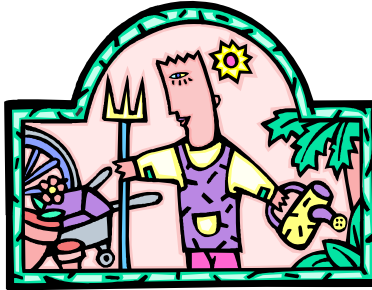


Backyard Gardening

Michigan State University Extension
Hillsdale County

Are you thinking about putting in a garden?



Maybe you already have a garden?

A 3-part workshop series to help have a more successful

provide you with information gardening experience.

Pre-registration is required.

Topics to be covered include, but are not limited to:

Part I: Planning

Thursday, April 2, 5:30 p.m. - 7:00 p.m.

- Location/Site requirements
- Planting dates
- Soil



Part II: Planting

Monday, April 13, 5:30 p.m. - 7:00 p.m.

- Techniques to get you off to a good start
- Companion planting
- Styles of gardening - space-saving, organic, container, etc.

Part III: Care/Maintenance

Thursday, April 23, 5:30 p.m. - 7:00 p.m.

- Watering
- Fertilizing
- Pest/Disease Control



Contact: Candace Gardiner, MSU Extension Health Associate, (517) 439-9301

Cost: \$8.00 per session or \$20.00 for all 3

Accommodations for persons with disabilities may be requested by calling the MSU Extension Office at 517/439-9301 by March 30th to ensure sufficient time to make arrangements. Requests received after this date will be met when possible.

Michigan State University Extension programs and materials are open to all without regard to race, color, national origin, gender, disability, age, religion, political beliefs, sexual orientation, marital status, or family status.

Backyard Gardening Workshop Registration

Name _____

Address _____ City _____

Phone _____ Email _____

I will be attending: Part I _____ Part II _____ Part III _____ Enclosed \$ _____

Make check payable to: MSU Extension - Hillsdale County
and mail to:

20 Care Drive, Suite B, Hillsdale, MI 49242