

# Community & Natural Resources Development Association

A professional association for  
Natural Resources, Community  
& Economic Development  
Extension staff

[web1.msue.msu.edu/crda](http://web1.msue.msu.edu/crda)

MICHIGAN STATE  
UNIVERSITY  
EXTENSION

## Why should I become a member of CNRDA?

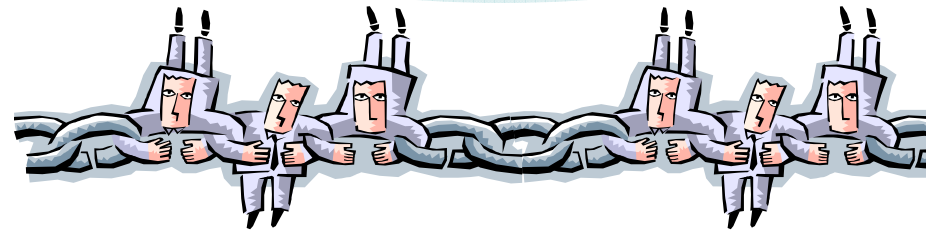
CNRDA's members enjoy a wealth of benefits, including:

- ❖ Quality professional development opportunities,
- ❖ A reward/recognition structure in education, research, and outreach in the CNRDA areas of expertise,
- ❖ Representation with MSUE Administration and other agencies and organizations within and outside MSU,
- ❖ Affiliation with national organizations which provide support for and
- ❖ Opportunities to network, share and mentor others engaged in educational, research, and outreach activities.

For more information

on current officers or other CNRDA background information,  
visit the website

[web1.msue.msu.edu/crda](http://web1.msue.msu.edu/crda)



## Other helpful web links:

Community Development & Natural  
Resources home page:

<http://web1.msue.msu.edu/crda>

Michigan Council of Extension  
Associations (MCEA):

<http://web1.msue.msu.edu/mcea>

Association of Natural Resource  
Extension Professionals:

<http://anrep.org/>

National Association of Community

Development Extension Professionals: <http://srdc.msstate.edu/na>

University Extension programs  
are open to all without regard  
to national origin, gender, religion,  
political beliefs, sexual  
orientation, marital status or family status.  
We are committed to affirmative-action/equal opportunity

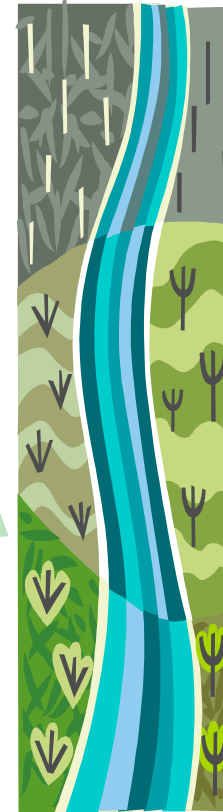
Printed on recycled paper

**CNRDA Areas of Expertise include:**

- Community Development
- Economic Development
- Land Use
- Forestry
- Recreation
- Rivers & Wildlife
- State & Local Government
- Water Quality
- WiFiNet (Leadership)



**The Mission of the MSU Extension Community & Natural Resources Development Association is to encourage excellence in educational programs, processes, research, and technical assistance through the exchange of ideas and methods, collaboration, and professional development of members to benefit communities.**



Memberships of this Association are available to all Michigan State University Extension professionals, Extension program associates, and Extension-related staff, or retirees.  
**For membership information, contact a CNRDA officer or log on to the CNRDA website (listed on front).**

CNRDA is jointly affiliated with two national associations:

- ❖ Association of Natural Resource Extension Professionals (ANREP)
- ❖ National Association of Community Development Extension Professionals (NACDEP)

Michigan State University  
 Community & Natural Resources  
 Development Association

Membership Registration  
 Annual dues (Jan 1-Dec 31)

Are you a member of another MCEA association? If yes, **subtract \$15**  
 Which one(s)? Please circle:  
 MAEA MAE4-HYS MEA  
 MESA ESP

Are you a member of an affiliated national association? If yes, **subtract \$5**  
 Which one(s)? Please circle:  
 NACDEP ANREP

**Total dues**  
 (make check payable to: CNRDA)  
 Name: \_\_\_\_\_

Address: \_\_\_\_\_

City/Zip: \_\_\_\_\_

Phone: \_\_\_\_\_

E-mail: \_\_\_\_\_

MSUE Region: \_\_\_\_\_

Mail payment/dues form to:  
 John Amrhein  
 Wexford County MSUE  
 401 North Lake Street, Suite 401  
 Cadillac, MI 49601  
 E-mail: [amrhein@msu.edu](mailto:amrhein@msu.edu)