

Michigan State University Extension



Michigan State University Extension (MSUE) helps people improve their lives through an educational process that applies knowledge to critical issues, needs and opportunities.

Since its beginning, Extension in Michigan has focused on bringing knowledge-based educational programs to the people of the state to improve their lives and communities. Today, community based agents supported by on-campus faculty members are serving every county, providing base programs focusing on agriculture and natural resources; children, youth and families; and community and economic development.

For more information contact:

MSU Extension - Delta County
County Extension Director
UP Tree Improvement Center
G005 J Road
Escanaba, MI 49829-9791
Phone: 906-786-1575
E-mail: cookw@msue.msu.edu

A portrait of **Delta County**



Bringing Knowledge to Life!

MICHIGAN STATE
UNIVERSITY
EXTENSION

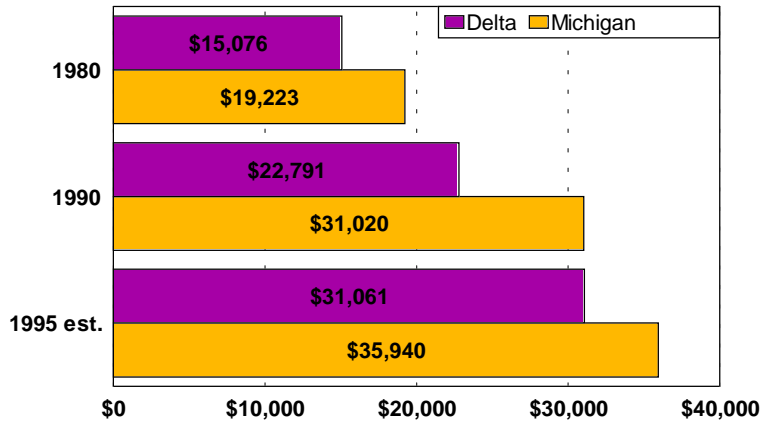
MICHIGAN STATE
UNIVERSITY
EXTENSION

Michigan State University Extension programs and materials are open to all without regard to race, color, national origin, gender, religion, age, disability, political beliefs, sexual orientation, marital status or family status.

Michigan State University, U.S. Department of Agriculture and counties cooperating.
Michigan State University is an affirmative-action, equal-opportunity institution.

Household Income

Median Household Income



- Between 1990 and 1995, households in Delta County experienced an increase in real median income of 16.9 percent, from \$26,575 to \$31,061. Real income is adjusted for inflation based on changes in the Consumer Price Index.
- Compared to other Michigan counties, Delta County ranked 45th in 1995 in median household income.
- Michigan leads most other Mid-West states in median household income at \$38,127 (1996 est.) ranking 4th among the 12 states in the region. Nationally, we rank in the top third. The U.S. median income was \$35,492.
- Per Capita income in Delta County in 1998 was \$21,878, compared to \$18,380 in 1990 (in 1998 dollars), a 19.0 percent increase.

Household Income Distribution*

	\$ 0 - \$24,999	\$25,000 - 49,999	\$50,000 +
Delta County	53.7%	33.3%	12.9%
Michigan	40.6%	34.1%	25.5%

* 1990 Census of Population & Housing

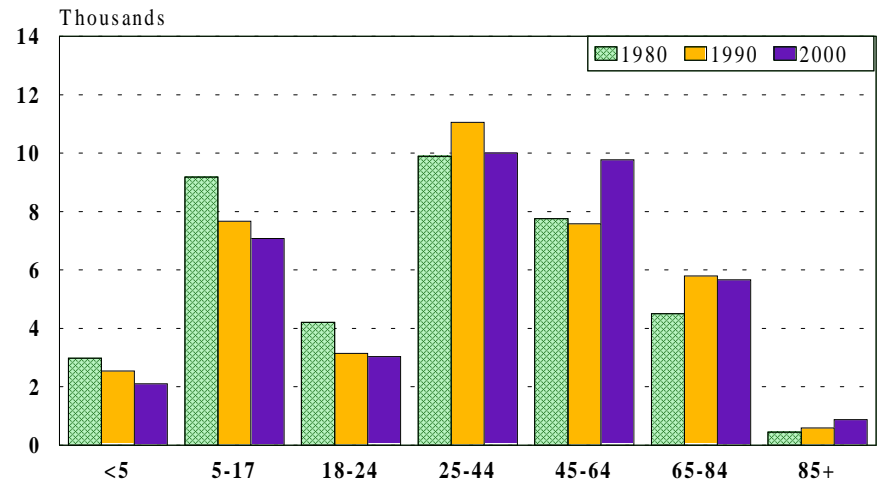
Age

The Median age of Delta residents continues to go up:

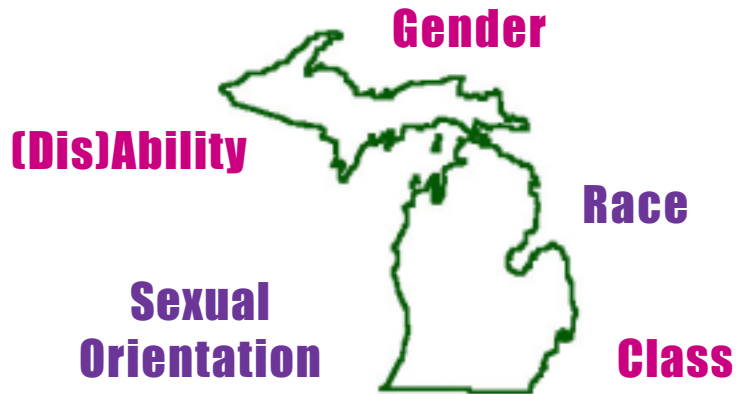
	1980	1990	2000
Delta	30.2	35.2	40.4
Michigan	28.8	32.6	35.5
U.S.	30.0	33.0	35.3

- Of the 38,520 people who lived in Delta in 2000, 59.2 percent were between 18 and 64 years of age; the remaining 40.8 percent included 5.5 percent children under the age of 5, 18.4 percent youth ages 5 to 17 and 17.0 percent over the age of 65.
- The fastest growing age group is the 45 to 64 year-olds, which includes the oldest of the “baby boomers.” This group grew by 2,194 or 28.9 percent since 1990.
- “Seasoned citizens,” those age 65 and over, grew by 752 or 13.0 percent since 1990. One in six Delta residents is age 65 or older.

Age Distribution in Delta County



Multiculturalism



- .. In 2000, Delta County's population included 18,928 males and 19,592 females, or 49.1 percent and 50.9 percent respectively. For Michigan, males represent 48.7 percent and females 51.3 percent.
- .. Of the 15,836 households living in Delta County in 2000, 12,601 or 79.6 percent owned their own home and 3,235 or 20.4 percent rented. For Michigan, the rate of home ownership was 71.0 percent and those renting 29.0 percent.
- .. Six to ten percent of the U.S. population are gay, lesbian, bisexual or transgendered persons according to the *Cultural Diversity Sourcebook*.
- .. One out of five Michigan citizens, approximately two million people, experience a disability according to the Michigan Centers for Independent Living.

Race and Hispanic or Latino Origin: 2000

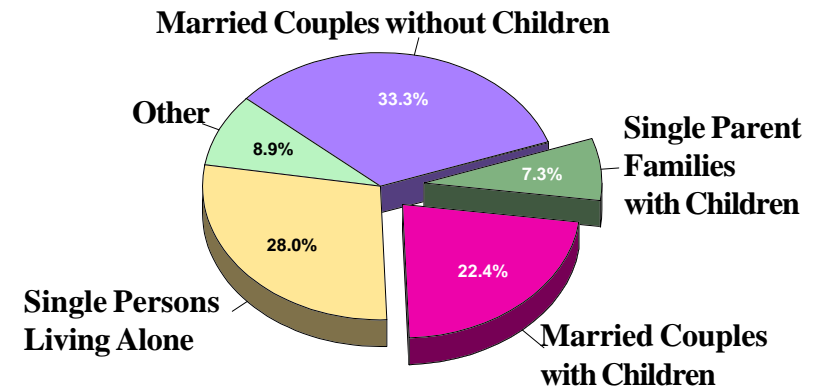
	Delta County		Michigan
	Number	Percent	Percent
White*	36,791	95.5	78.6
Black*	35	0.1	14.1
American Indian*	841	2.2	0.5
Asian*	120	0.3	1.8
Other*	30	0.1	0.1
Two or more races*	516	1.3	1.6
Hispanic or Latino	187	0.5	3.3

* Not Hispanic

Households & Families

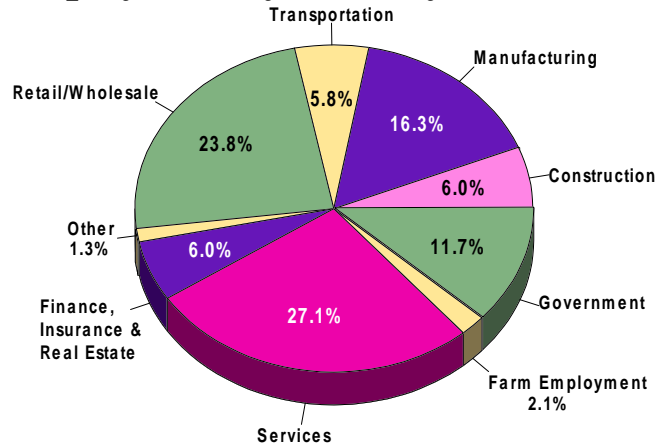
- .. There were 295 marriages in Delta County during 1998, down from 1990 when 353 marriages occurred. Across the state, marriage numbers and rates have fallen since the '70s.
- .. In Michigan, median age at marriage continues to go up, from age 25 for males and 23 for females in the mid-'70s, to age 28 for males and 26 for females in 1998.
- .. 65.1 percent of all marriages in Michigan in 1998 were first marriages, down from 66.8 percent a decade earlier.
- .. The divorce rate in Delta County in 1990 was 8.6 when 163 divorces occurred. In 1998, the rate was 8.8 when 172 marriages ended in divorce.
- .. In 1998, 37,210 Michigan children were impacted by divorce of their parents. These numbers have declined since 1976 when Michigan reached a peak of 49,555 children involved in divorce.
- .. In 1990, 1,723 children in Delta County under age 18 lived with a single parent. This represented 16.9 percent of all children in Delta. In Michigan, 22.5 percent of all children lived in single parent families.

Types of Households in Delta County



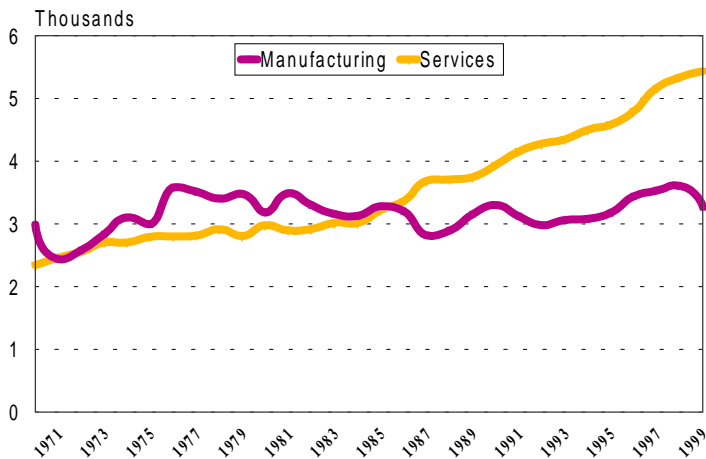
2000 Census of Population and Housing

1999 Employment by Industry in Delta County



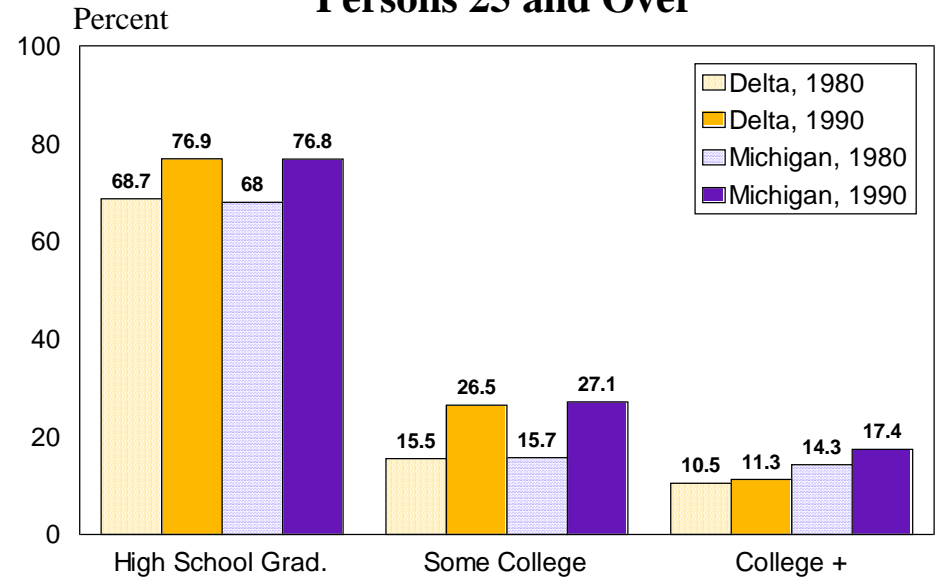
- The total number of full- and part-time jobs has increased in Delta from 17,253 in 1990 to 20,052 in 1999, a 16.2 percent increase.
- Services accounted for 27.1% of all employment in 1999, leading Retail and Wholesale Trade by 3.3 percentage points. Jobs in Services have risen the fastest of all industries, climbing 38.0 percent since 1990.

Jobs in Manufacturing & Services

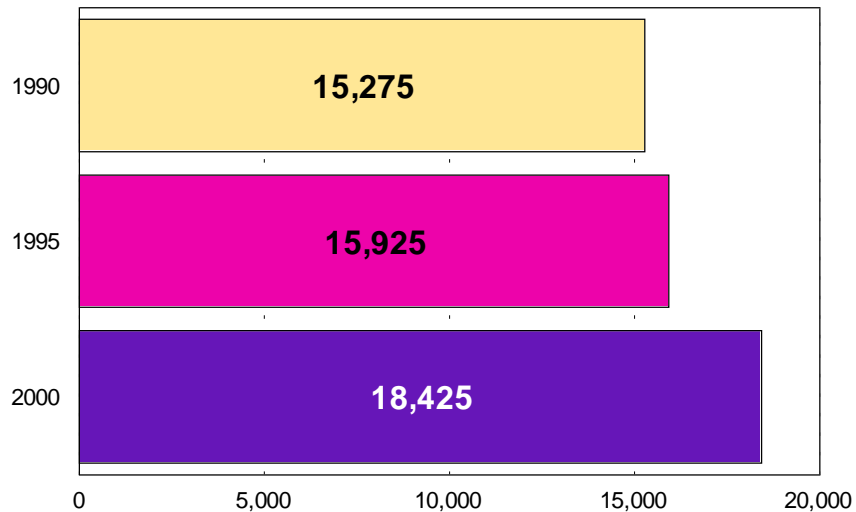


- High school graduation rates increased significantly from 1980 to 1990 for persons age twenty-five and over – by 8.2 percentage points in Delta County and 8.8 percentage points in Michigan. This is due largely to the fact that a much higher rate of young adults (age 25-29) has completed high school than those in older age groups.
- Delta County lags behind Michigan for those persons age 25 and over with a college degree. In 1990, 17.4 percent in Michigan had a college degree; in Delta County the rate was 11.3 percent. Delta ranks 40 among Michigan’s 83 counties for persons age 25 and over with a college degree.
- 69 students dropped out of high school in Delta County during the 1997-98 school year for a rate of 2.8 percent. This is down from 1990-91 when 77 students dropped out (3.2 percent).

Educational Attainment Persons 25 and Over



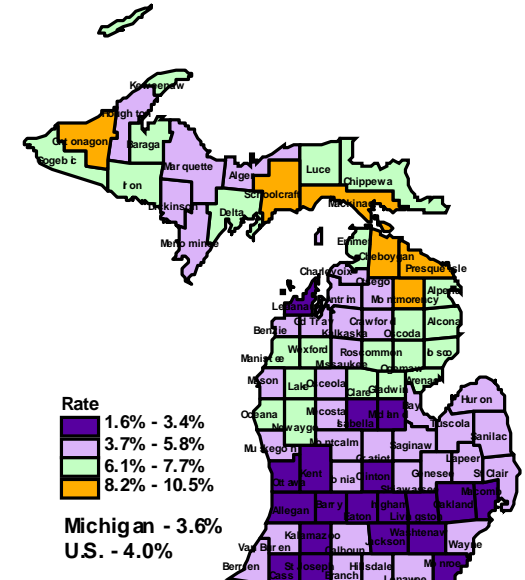
Total Number of Persons Employed in Delta County



- The Labor Force consists of those who are employed and those currently unemployed but seeking employment. Delta's labor force has grown from 16,900 in 1990 to 19,650 in 2000.
- In 1990, 90.4 percent of the labor force was employed; in 2000 that increased to 93.8 percent employed.
- 64.2 percent of Delta's population age 16 and over were in the labor force in 2000, up from 58.8 percent in 1990.
- Sixty-six percent of all women with school age children worked in 1990, nearly 12 percentage points higher than in 1980. Over five out of ten women with children under age six were in the work force in 1990, compared to three out of ten in 1980.

2000 Unemployment Rate

- Even though Michigan's overall unemployment rate was low in 2000, many counties continue to experience high rates.
- Delta County's annual average unemployment rate in 2000 was 6.2 percent, compared to 6.4 percent in 1999 and 9.6 percent in 1990. 1,225 people were unemployed in 2000, compared to 1,625 in 1990.
- Michigan experienced high unemployment rates during the early '90s. In 1994 for the first time Michigan's rate was lower than the U.S. rate.



Unemployment Rate: 1980 - 2000

