

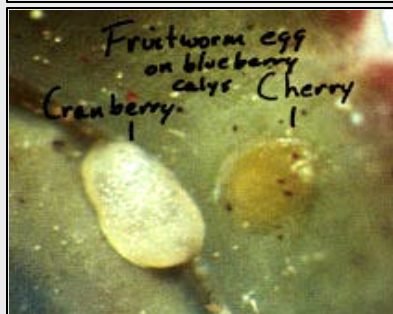
Fruitworm Identification in Blueberries



Cranberry Fruitworm moths have a 16-18mm wingspan, with two light gray-white spots on brown wings. The abdomen is dark brown with cream-yellow stripes along its length. Pheromone traps used to monitor the activity of adults should be placed at field edges a few weeks before the first petal-fall, and checked once or twice-weekly.



Cherry Fruitworm moths have an 8-11mm wingspan, and the whole wing is striped across with dark gray and black stripes. Pheromone traps used to monitor the activity of adults should be placed at field edges a few weeks before the first petal-fall, and checked once or twice-weekly.



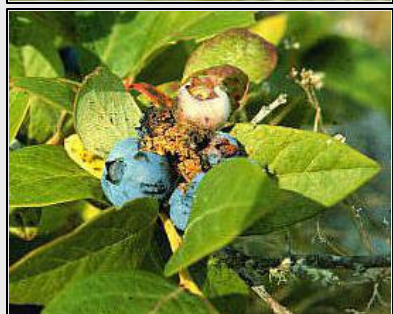
Fruitworm eggs are about 1mm diameter, and usually laid in the calyx cup of blueberries. Egg laying starts immediately after petal-fall and continues for one month. Cranberry fruitworm eggs are irregularly oval and turn from white to yellow during development. Cherry fruitworm eggs are more flat and circular, with a reflective surface.



Cranberry Fruitworm larvae are up to 15mm long, and are usually pale yellowish green with an amber head capsule and fine hairs along their body. These larvae become more red near to full development. They enter berries at the stem end, and feed on many berries in a cluster and web these together with silk (see below).



Cherry Fruitworm larvae are up to 9mm long, and are similar to cranberry fruitworm, but are more reddish in color. They do not have hairs, but have a darker head capsule. They enter fruit in the calyx cup or on the side, feeding on one or a few berries, and produce little silk (see below).



Damage by fruitworms turns berries blue prematurely, making this easy to see early in the season. Cherry fruitworm damage is usually on single fruit, whereas cranberry fruitworms web a cluster of berries together, and deposit sawdust-like frass between the fruit. Early in the season it is difficult to separate damage by these two insects without examining the larvae directly.